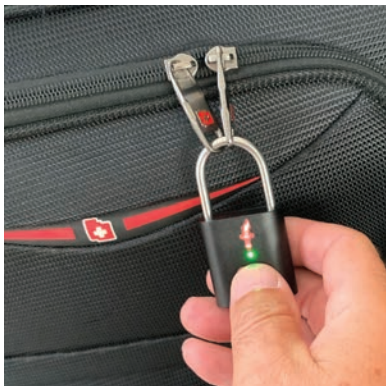




Thank you for your purchase.
We hope you will enjoy your new TOKK™ Fingerprint Lock.

Watch the Step by Step demo videos on our Support page on our Website: www.tokktech.com

For further assistance contact our customer service:
phone: +1 (858) 999-2114 ext 1
email: service@predtechnologies.com



Pred Limited Warranty

Pred Technologies USA Inc. warrants this product against defects in material or workmanship as follows:

- 1.Labor and Parts: If this product is determined to be defective. Pred Technologies will repair or replace the product, at its option, at no charge. From and for a period specified by the retail partner you have purchased our product from.
- 2.Proof of purchase in the form of a bill of sales or receipted invoice which is evidence that the unit is within the Warranty period must be presented to obtain warranty service.
- 3.To obtain warranty service, please contact our customer support center: Via email service@tokktech.com or call 1 (858) 999-2114 ext 1

This warranty gives you specific legal rights and you may also have other rights which vary from state to state.

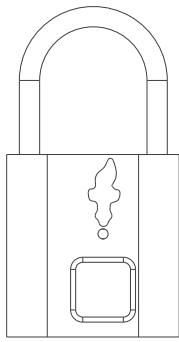
Thanks,

Pred Technologies USA Inc.
© 2024 PRED Technologies USA Inc.
All Rights Reserved.
Features specifications and appearance are subject to change with out notice.

Manufactured & Distributed by:
PRED Technologies USA Incorporated.
4901 Morena Boulevard, San Diego CA 92117
www.predtechnologies.com

TOKK™

Fingerprint Padlock (TSA)



Fingerprint



Long Standby Time



USB Charge



TSA

I. Interface:

Components:

1. USB Port
2. Fingerprint Sensor
3. LED Light (Green/Blue/Red)
4. Shackle
5. TSA Keyhole



*REMARKS:

- The lock is charged by USB.
- Fully charge the lock before set up.
- Upon reception locks are set to be opened by any fingerprint. Just touch the sensor to open.

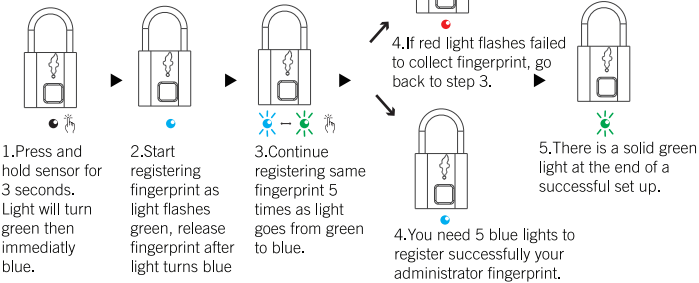
II. Indicator Light Chart:

3-color indicators (Green, Blue, Red).
Each indicator represents a different lock status:

LED	Function	Mode
	Flashing Red Light	Failed to collect fingerprint
	Flashing Green Light	Fingerprint collection mode
	Solid Green light	Ready to collect Fingerprint
	Solid Blue light	Fingerprint collected and recognized
	Flashing Blue light	Restore Factory Mode
	Solid Red light	Fingerprint re-set mode

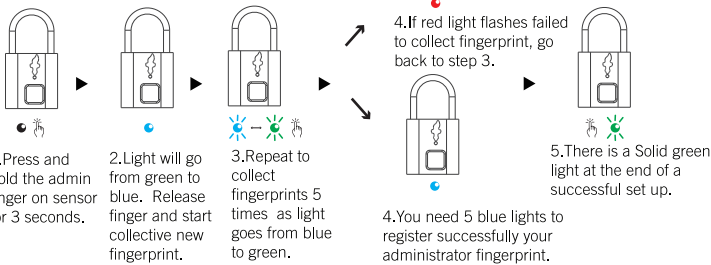
III. How to Register The First Administrator's Fingerprint:

*This lock allows to program 2 Administrator's Fingerprint, the first and the second finger are the administrators by default.
This lock allows to program up to 10 Fingerprints (including the 2 Admins one)

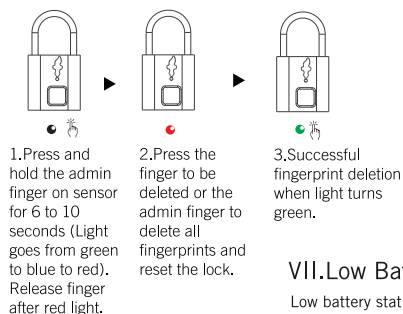


IV. How to Add Additional Fingerprints:

*This lock allows to program 2 Administrator's Fingerprint, the first and the second finger are the administrators by default.
One of the Admins fingerprint is needed to collect any other fingerprints.
This lock allows to program up to 10 Fingerprints (including the 2 Administrator's one)



V. How to Delete Fingerprints:



*Only the administrator fingerprint can delete any fingerprint and reset the lock.

VI. Specifications:

- Support 360 degree angle
- Resolution: 508DPI
- ESD: +/-12kV air, +/-8kV contact
- FRR: <1%
- FAR: <0.002%
- Recognize time: <300ms
- Battery: 3.7V 60mAh

VII. Low Battery:

Low battery status will be indicated by red indicator light flashing. In this case plug in the lock to charge. It is also possible to recharge it with a portable power bank. Your admin finger will not be deleted if the lock runs out of battery.