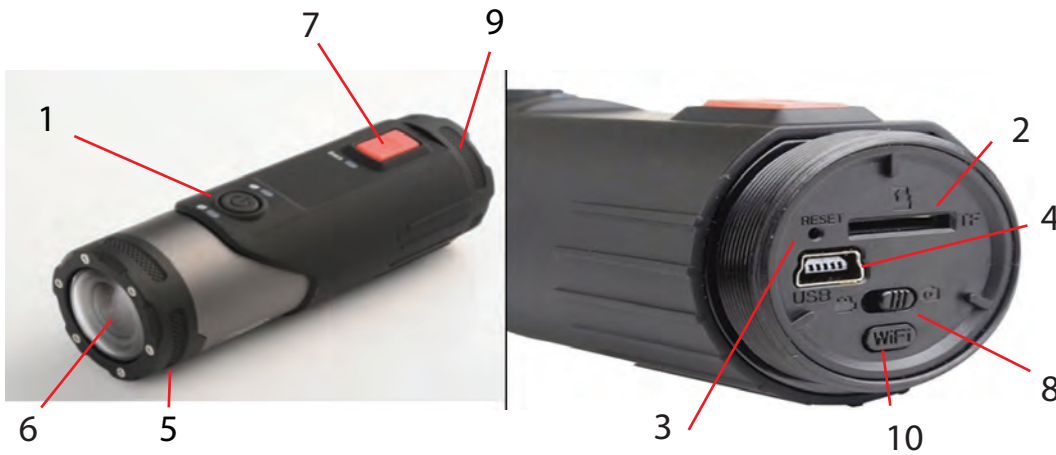


Quick set up guide:



TOKK™ 4K DASH CAM



1. Power Button
2. Micro-SD Slot
3. Reset
4. USB Port
5. Mic
6. Lens
7. Record
8. Switch Video/Photo
9. Cap
10. Wifi

To access the sd card slot / USB / Wifi unscrew the cap (9) at the bottom of the camera)
If you have a SD card, insert it in the Micro-SD Slot (2).

1- Download the application called “Roadcam” on your smart device (App available on the App Store for iOS and Google play for Android). Make sure Cellular data in turn off in the Roadcam App in your settings.

2- Power on the Camera (1)

4- Turn on the Wifi from the camera (10)

4- Go to WIFI settings on your smart device.

4- Wait until the wifi named “ActionCam-xxx”, when it appears select it.

-Wait for ActionCamxxx to connect (disregard messages like “unsecured network, or”/no internet access...”) as long as “ActionCam xxx”, is selected as your wifi network you can close the settings (make sure that in your phone settings in the RoadCam app settings the cellular data is off)

5- Open the “Roadcam” app, and Press ActionCam xxx, this will open the live view.

6-Configure all the camera parameters directly from the App (open the setting menue upper right corner)

7- Once configured, you can used your action Cam with or without the App (just turn on the cam and press record 7)

Congrats you have set up your new TOKK™ 4K DashCam.

Need more help to set up and check out all the Fonctions of the camera and the App:
Watch our video and download the full app documents on our website: www.tokktech.com
or call us and we will be very happy to help you. Our phone number is +1 858 999 2114 ext 1

PRED Technologies USA Inc.
7855 Fay Avenue
La Jolla, CA 92037

1-858-999-2114
contact@predtechnologies.com
www.predtechnologies.com

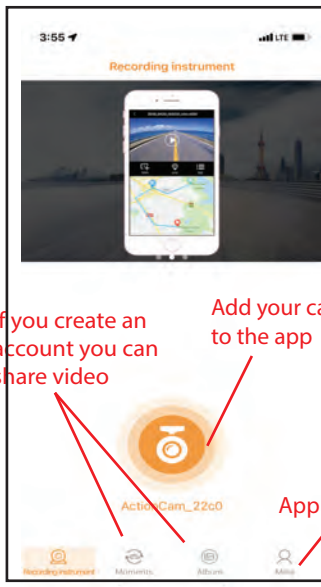


Key Accessories

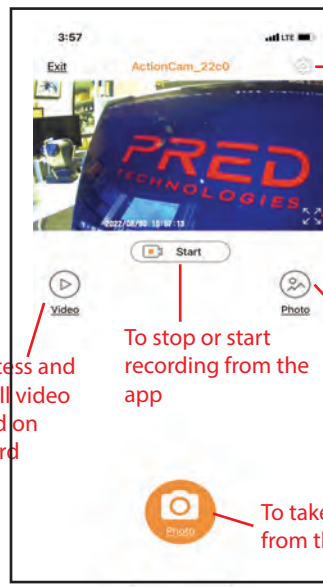


App main Pages

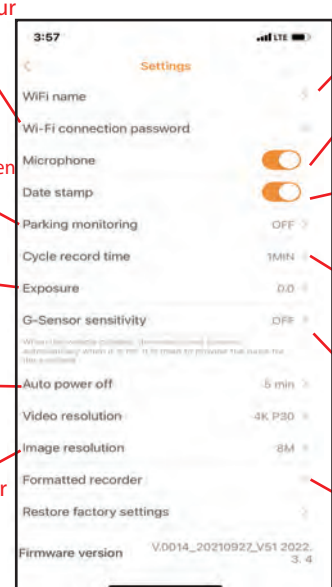
1st App Page



Live View Page



App Settings menu



To rename your camera

Turn off or on the microphone

Turn off or on date and time when recording

Camera saves set the length of recording

if an accident occurs the camera will protect the video recordings

Set image recorder for photo mode

PRED Technologies USA Inc.
7855 Fay Avenue
La Jolla, CA 92037

1-858-999-2114
contact@predtechnologies.com
www.predtechnologies.com

