

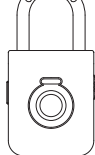
TOKK™

Fingerprint Padlock PL7001

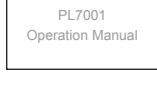
Operation Manual



I. Contents

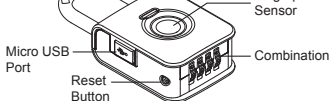
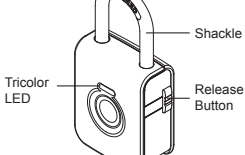


PL7001 Fingerprint Padlock x1



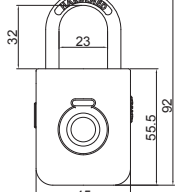
User Manual x1

II. Part Name



III. Specifications

Model	PL7001 Fingerprint Padlock
Battery	50mAh 3.7V
Battery Life	Up to 1,500 times operations
Idle Mode	Standby over 130 days
Micro USB Input	DC 5V / 500mA
Operation Temp	-20°C ~ 70°C
Storage Temp	-40°C ~ 85°C
Body Material	Zinc Alloy, Hardened Steel
Weight	Net: 206g / Gross: 350g
Unlock Mechanism	Fingerprint / 4-digit pass code
Groups of Fingerprint	Stores up to 10 fingerprints



Unit: mm

IV. Features



Battery Life

After each full charge, the PL7001 Fingerprint Padlock can be operated up to 1,500 times. Without any operation (Idle mode), PL7001 can standby over 130 days.

Low Battery Indicator

When batteries voltage $\leq 3.7V$, each time it is successfully unlocked, the LED status indicator will light up in Green for 1 sec and flash in Red 4 times. PL7001 Fingerprint Padlock can still operate up to 100 cycles in low battery condition. When batteries voltage $\leq 3.5V$, PL7001 Fingerprint Padlock cannot be operated.



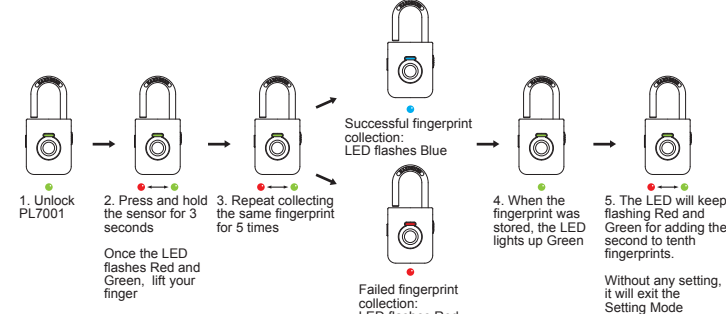
Emergency Unlock

4-digit resettable combination for emergency unlock.

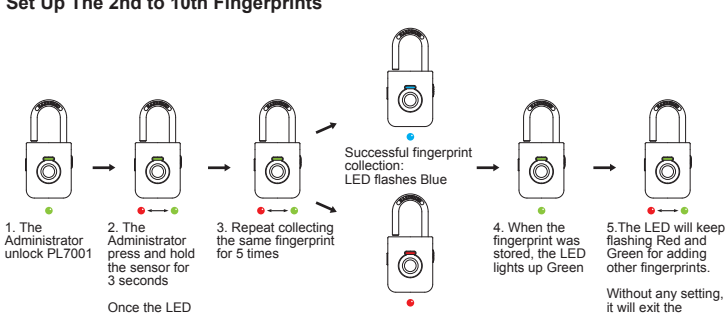
※ Fully charging your battery before use.

V. Operation Instructions

Set Up The First Administrator's Fingerprint



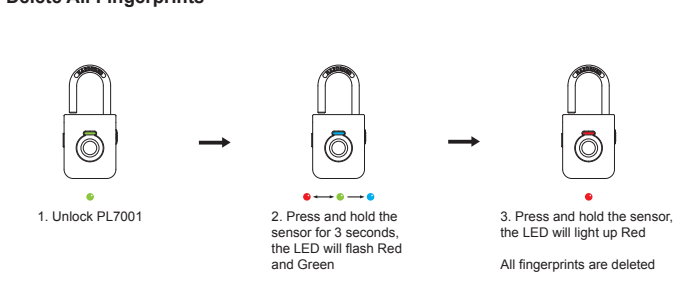
Set Up The 2nd to 10th Fingerprints



Remarks:

- The first and second fingerprints are the administrators by default.
- One of the administrators fingerprint will be need to authorize when adding fingerprints.

Delete All Fingerprints

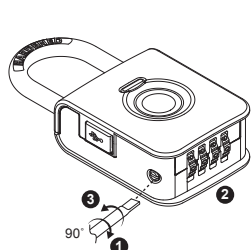


Remarks:

Only the administrators can delete the fingerprints, all the fingerprints will be deleted at one time.

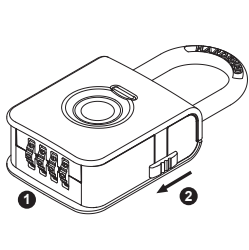
Setting Your Own Combination

Emergency Unlock



- Turn the Reset Button 90° clockwise
- Scramble the Dials to set your own combination
- Turn the Reset Button 90° counterclockwise back to its original position

Your lock is now ready to open at its new combination



- Scramble the Dials to the combination you've set
- Press the release button to unlock

VI. Audio and LED Indications

Setting Mode

Reset Mode

Description	LED Indications	Sound Effect
Press and hold the sensor for 3 seconds to enter the Setting Mode	Flash Green and Red	1 Short beep
Successful fingerprint collection	Lighting Blue for 0.5 sec	1 Short beep
Failed fingerprint collection	Flash Red 3 times	3 Short beeps
Fingerprint stored successfully	Lighting Green for 1 sec	1 Long beep
Without any settings, it will exit the Setting Mode after 10 seconds	Green and Red LED off	-

Description	LED Indications	Sound Effect
The administrator press and hold the sensor for 3 second	Flash Green and Red	1 Short beep
The administrator keeps holding until the LED lights Blue to enter Reset Mode, life the finger	Flash Blue	1 Short beep
The administrator press and hold the sensor to erase all settings	Lighting Red	1 Long beep
Exit Reset Mode	Red LED off	-

Unlock

Description	LED Indications	Sound Effect
Successfully unlocked by fingerprint	Lighting Green for 1 sec	1 Long beep
Failed to unlock by fingerprint	Flash Red 2 times	2 Short beeps

Recharging

Description	LED Indications	Sound Effect
Recharging	Continuous Lighting Red	-
Complete charging	Continuous Lighting Green	-