

# Quick set up guide:

## TOKK™ WATERPROOF USB FINGERPRINT

**PRED**  
TECHNOLOGIES™



1. Fingerprint Sensor
2. USB
3. Protective cap
4. LED

Thank you for your order. We hope that you will Enjoy your new TOKK Fingerprint USB. Below is our quick set up guide. If you want more details please refer to the complete instruction manual. If you encounter any issues setting up your new USB Fingerprint, please do not hesitate to call us and we will be very happy to help you. Our customer service phone number is +1 858 999 211 ext 1.

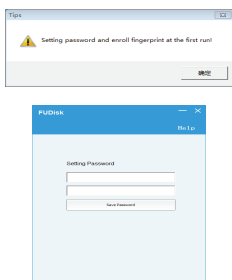
### Requirement:

To set your Fingerprint application software: Windows XP, Vista, Windows7, Windows 8, Windows 10.

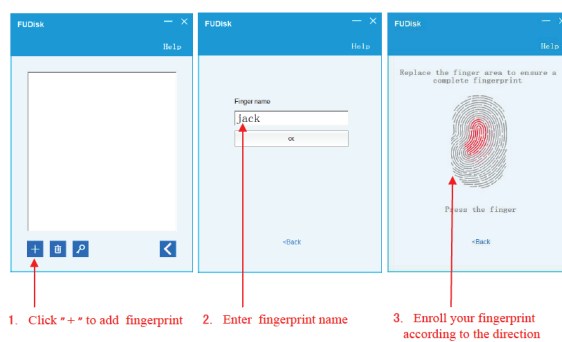
To access storage : Windows XP, Vista, Windows 7, Windows 8, Windows 10, Linux, Mac(Can recognize the fingerprint and unlock the secure partition). A full version of the Instruction Manual is on the USB itself.

- 1/ Plug in the USB Fingerprint (2) port on your computer.
- 2/ Open the drive "CD Drive (D:) AP
- 3/ Double Click the application icon "FPU.exe" to run the application and register your fingerprint.
- 4/ The Application will start running please follow the instructions in the app:

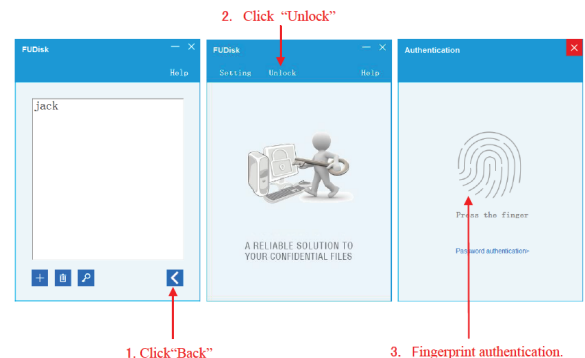
### 1/ Set a Password



### 2/ Enroll your Fingerprint



### 3/ Open the Secure Partition



5/ When the fingerprint is correct, the secure partition pop up, "Security" is the secure partition.

6/ Close the application or pull out the flash drive, the "Security" partition is automatically closed.

PRED Technologies USA Inc.  
7855 Fay Avenue  
La Jolla, CA 92037

1-858-999-2114  
contact@predtechnologies.com  
www.predtechnologies.com

**PRED**  
TECHNOLOGIES™